



JOCMA28D-SVS4

Rev.A.1.0

DESCRIPTION:

7KH SURGXFVW DUHODSVQ 7KSWG FDFU LV D YHU\
VPDOO RXWODCHH Q SC RWRUHOD\ VXLWDEOH IRU VXUIDFH PF
DVVHPEO\ ,W FRQVLVWV RI DQ LQIUDUHG /(' RSWLFDQO\ FR
SKRWR 026)(7 DQG LV KRZVHSDEQDJH ,W IHDWXUHV
ORZ RXWSXW FDSDFLWDEQFHID&M)RQRDI VZLWFKLQJ RI
KLJK IUHTXHQF\ VLJQHDOO PDUNVZLWFKLQJ DSSOLFDFWLR
LQ KLJK VSHHG WHVWHWUHW7ZIHGSHORGXWHG LQ DXWRPDWL
WHVW HTXLSPHQW KLWVWSHHHG KRJKFV,SHHG PHPRU\
WHVWHUV DQG PHDVXULQJ LQVWUXPHQVV

MAIN FEATURES

- ,VRODWLRQ YRQMDJH
2SHUDWLQJ WHPSHUJHWXU& WR f&
5(\$&+ 5R+6 FRPSOLDQFH
+%0 + \$ 00 0 &'0 &
&4& DSSURYHG
9'(DSSURYHG
8/ DSSURYHG

ABSOLUTE MAXIMUM RATINGS 7HP SHUDWXUH f&

6ROGHULQJ 7HP SHUDWXUH	7VRO		
------------------------	------	--	--

NOTE1 $i_i \dots \cdot \%_0 \mu i_0 \cdot (\text{OE} \lt \mu \vee \text{C}$

NOTE2 $(\text{OE} i_u]v\mu\check{s} U ZX, XA\delta i \cdot \delta i_9$

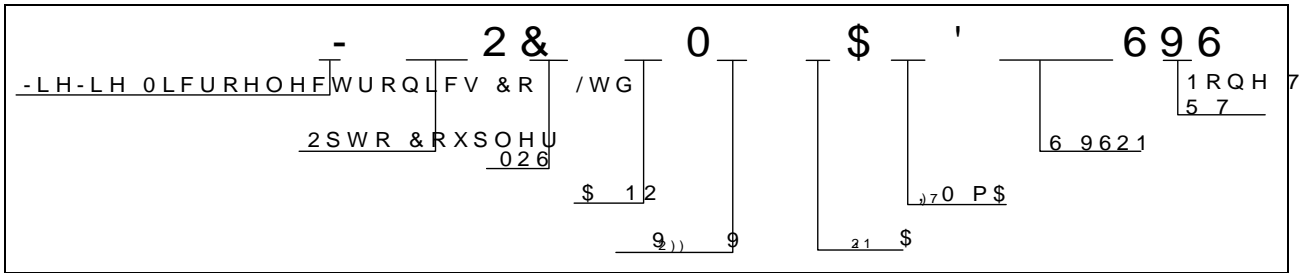
ELECTRICAL CHARACTERISTICS 7HP SHUDWXUH *f* &

Parameter		Symbol	Condition	Min.	Typ.	Max.	Unit
, Q SXW)RUZDUG 9ROWDJH) 9 P\$				9
	5HYHUVH &XUUHJQW		5, 9		9		\$
	, Q SXW &DSDFLWDQFH		9 9 I 0+]				S)
'HWHFWRU	2II VWDWH &XUUHJQW		2)) 9	9			Q \$
	2XWSXW &DSDFLWDQFH		9 9 I 0+] W V				S)
&RXSOHG	7ULJJHU /(' &XUUHJQW)7	21 \$				P \$
	5HWXUQ /(' &XUUHJQW)&	2)) \$				P \$
	2Q VWDWH 5HVLVWDQFH	521	21 \$) P\$ W V				
6ZLWFKLQJ &KDUDFWH	, VRODWLRQ J5HVLVWDQFH	5, 62	' & 9 a 5 +				
	7XUQ 2II 7LPH	RQ	W) P\$				P V
	7XUQ 2II 7LPH	RII	W / 0D[

Recommended Operating Conditions

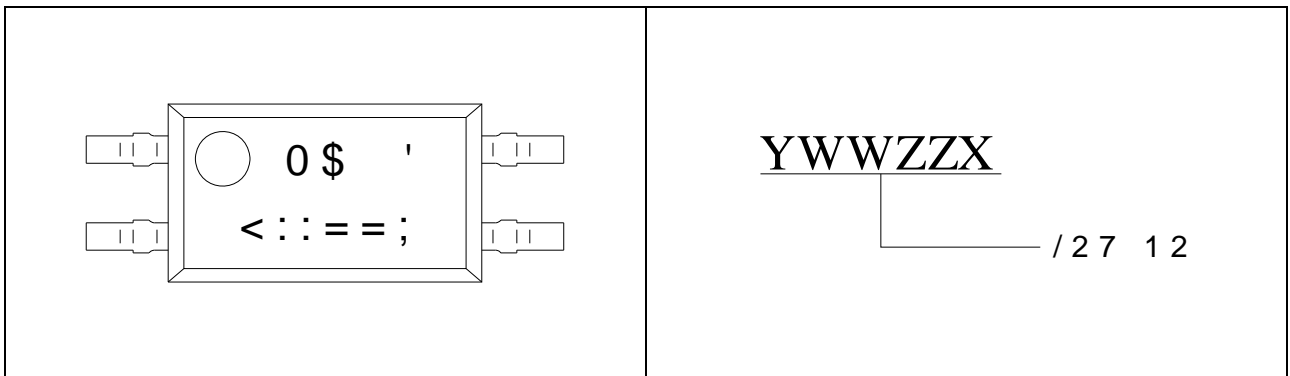
Characteristics	Symbol	Min.	Typ.	Max.	Unit
6XSSO\ 9ROWDJH	9'				9
, Q SXW)RUZDUG &XUUHJQW					
2Q VWDWH &XUUHJQW	21				
2SHUDWLQJ 7HP SHUDWXUH					

ORDERING INFORMATION



Packing Quantity	
Option	Quantity
E } v IZ	î ñ ì h v] š • IZ o

MARKING



Characteristics Curves

FIG.1: $I_{DQ} \sim U_{DS}$ & $I_{DQ} \sim U_{GS}$

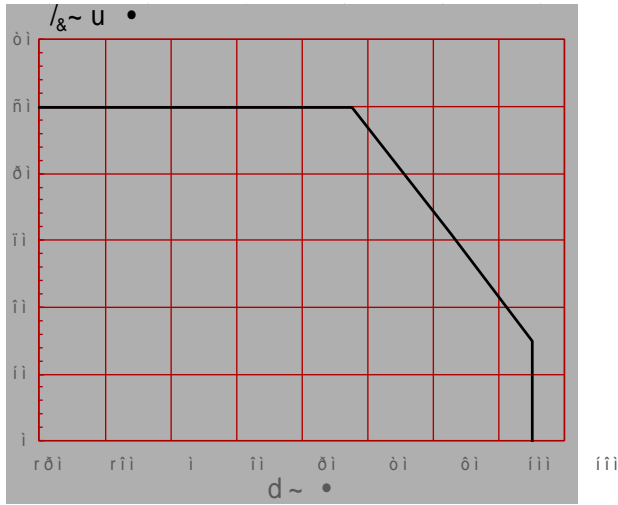


FIG.2: $I_{DQ} \sim U_{DS}$ & $I_{DQ} \sim U_{GS}$

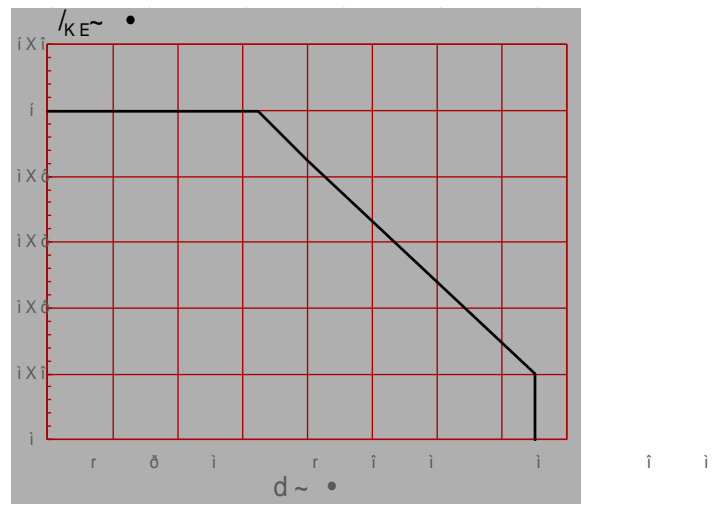


FIG.3: $I_{DQ} \sim U_{DS}$ & $I_{DQ} \sim U_{GS}$

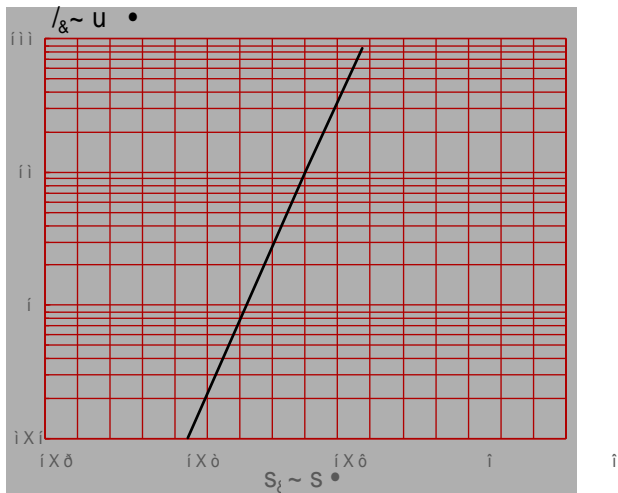


FIG.4: $I_{DQ} \sim U_{DS}$ & $I_{DQ} \sim U_{GS}$

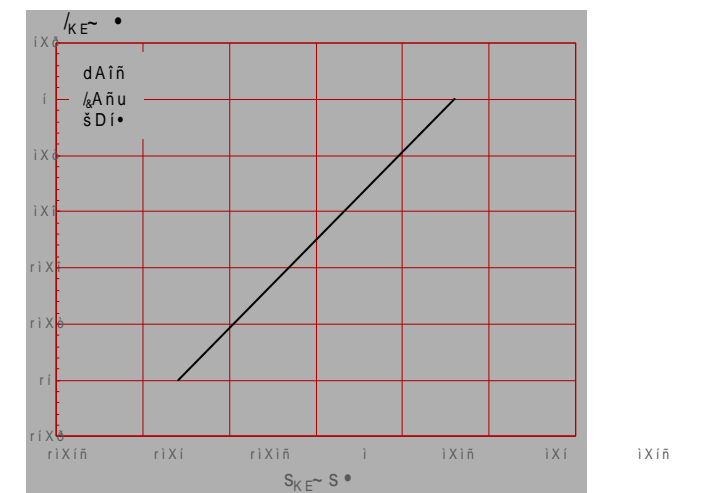


FIG.5: $I_{DQ} \sim U_{DS}$ & $I_{DQ} \sim U_{GS}$

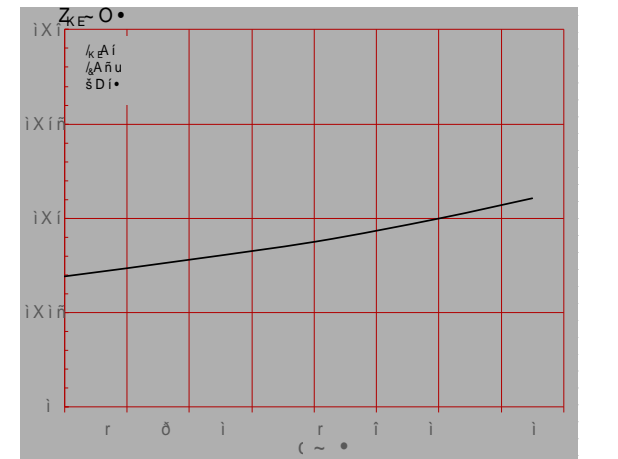


FIG.6: $I_{DQ} \sim U_{DS}$ & $I_{DQ} \sim U_{GS}$

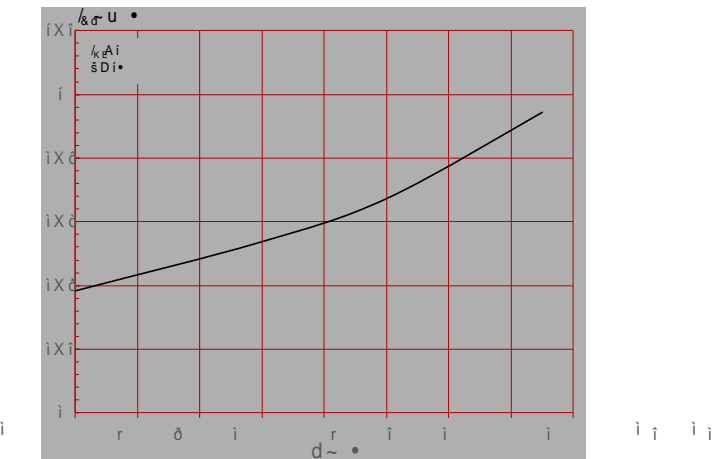


FIG.7: $I_{CE} \sim I_{BE}$ & $I_{CE} \sim V_{CE}$ CHARACTERISTICS & FIG.8: $I_{CE} \sim I_{BE}$ & $I_{CE} \sim V_{CE}$ CHARACTERISTICS

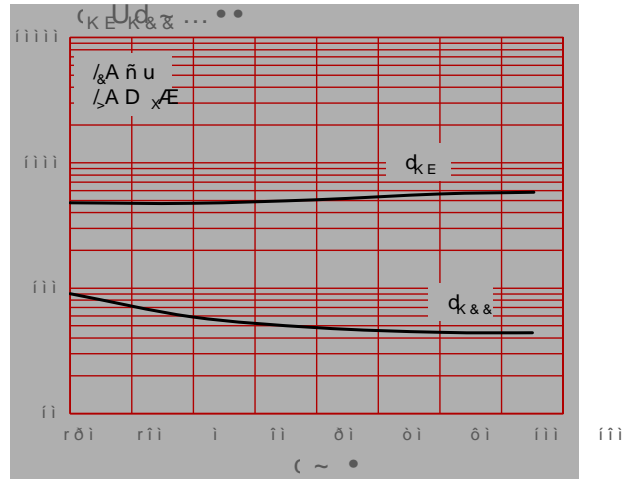
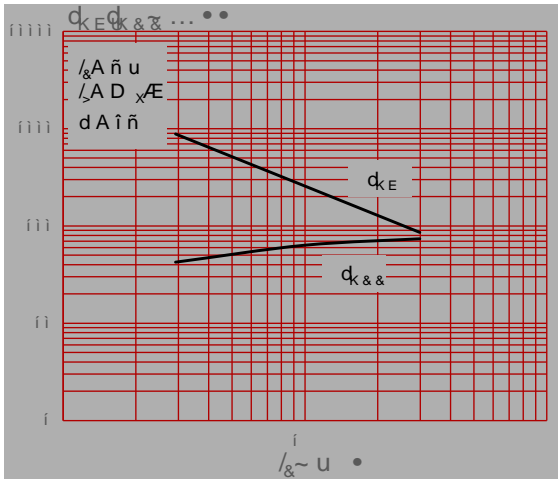


FIG.9: $I_{CE} \sim V_{CE}$ CHARACTERISTICS & FIG.10: $I_{CE} \sim V_{CE}$ CHARACTERISTICS

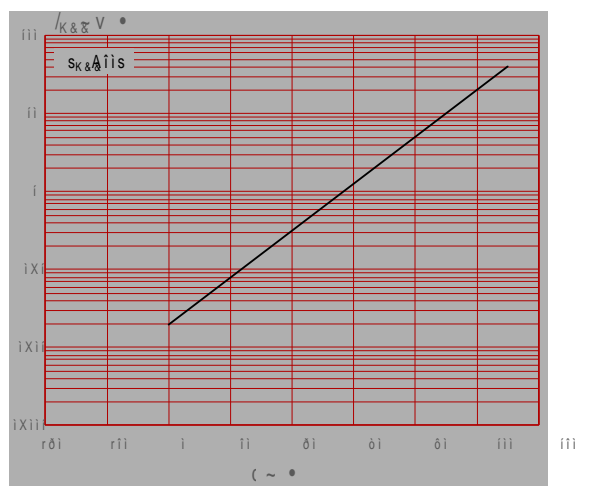
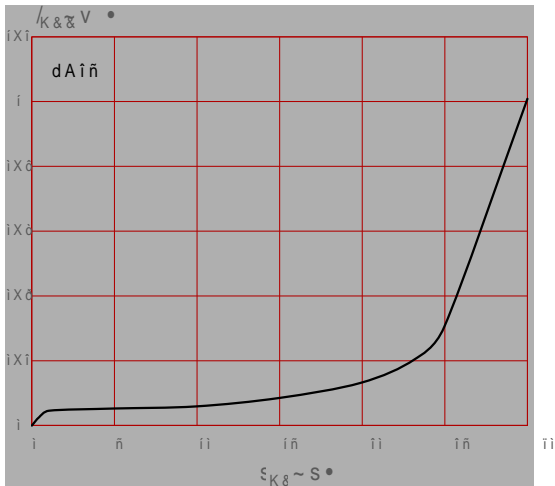
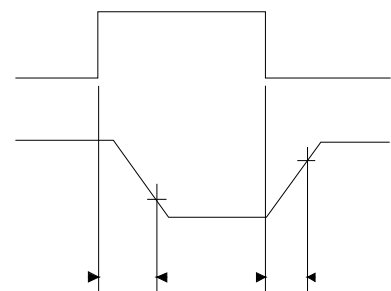
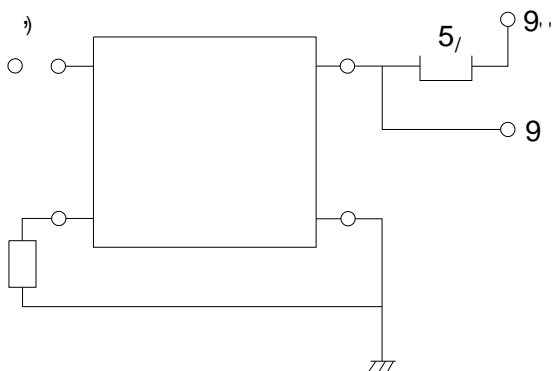
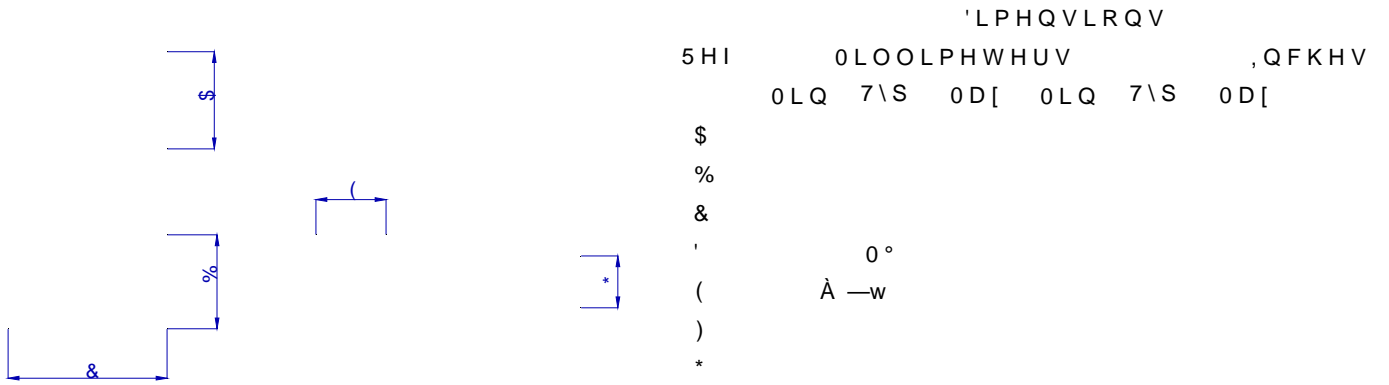


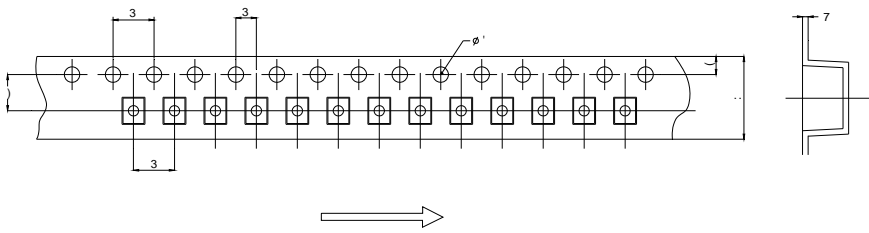
Fig.11: Switching Time Test Circuit and Waveform



Package Dimension (Unit: mm)

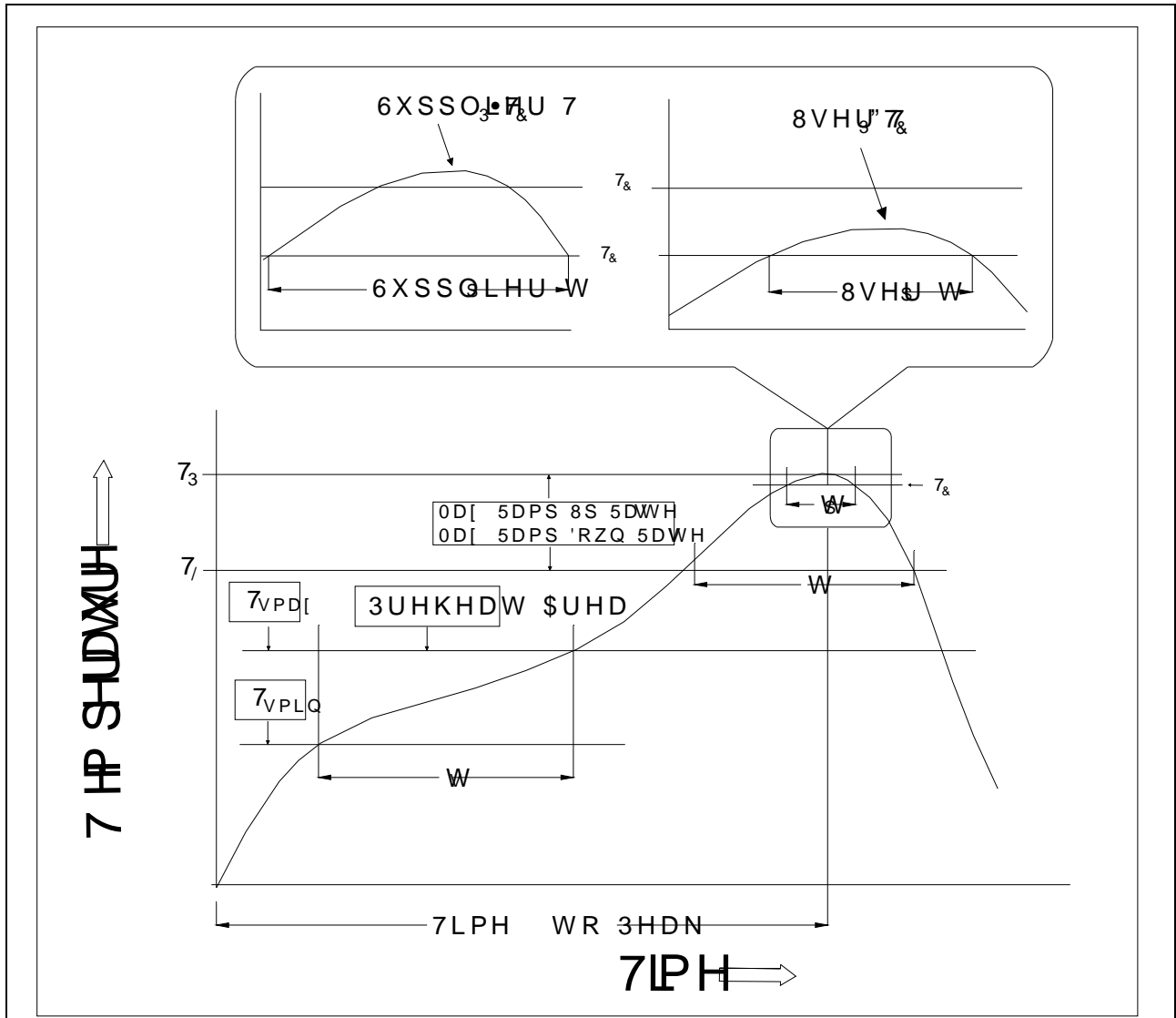


CARRIER TAPE SPECIFICATIONS (Dimensions in mm unless otherwise stated)



		'LPHQVLRQV					
5HI		0LOOLPHW			HUV ,QFKHV		
		0LQ	7\1S	0D[0LQ	7\1S	0D[
.							
3							
3							
3							
(
)							
7							
:							

REFLOW INFORMATION



Profile Feature	Sn-Pb Assembly Profile	Pb-Free Assembly Profile
7HP SHUDWXUH 0LQ	7VPLQ	
7HP SHUDWXUH 0D[7VPD[
7LPH W V IURP 7VPLQ WR 7VPD[VHFRQG V
5DPS XS 5DWH W/ WR W	VHFRQG PD[VHFRQG PD[
/LTXLGXV 7HP SHUDWXUH 7/		
7LPH W/ 0DLQWDLQH \$ERYH 7/		VHFRQG V
3HDN %RG\ 3DFNDJH	7HP SHUDWXUH	
7LPH W3 ZLWKLQ		VHFRQG V
5DPS GRZQ 5DWH 73 WR	VHFRQG PD[VHFRQG PD[
7LPH WR 3HDN 7HP SHUDWXUH		PLQXW HV PD[

1RWH

5HIORZ VROGHULQJ LV UHFRPPHQGHG DWRVGHQRHPSHHDWKXUHWK
\$YRLG GLUHFV FRKWDHFRBEEPRZHQQRXLD DFRUV H[FHHGLQJ LWV PD
VWRUDJH WHPSHUDWXUH

\$SSOLFDWLRQ RIIHSURVXELURKQZWSOHGDDWHG WHPSHUDWXUHV ,QV
VFHQDULRV DQHPSVOLHQRWRHFFHHG 1

(QVXUH WKH FRPSRQHGW KDV FRROHG SMRRDREHGHQVWHPHUTXMXQ
PDQXIDFWXULQJ VWHSV

7KH FRPSRQHGWKH BV DQVKHDIUOZKHQVWDQGHGKFRQGLWLRQV


5HFRPPHQG VWRUDJH 7HPS a f&

5HFRPPHQG VWRUDJH KXPLGLW\

06/ OHYHO 06/

,QIRUPDWLRQ IXUQXFKHQW LQ WKOLHGRHFG WR EH DFFXUDWH D
-LDQJVVX -LH-LH 0LRRHOWHGFWDVROLFFVQLRVUHRUSRQVLEERQVHT
RI XVH ZLWKRXW FRQVLGHUDWLRQ IRG MWFKQIQURPDVWLRQ
LQ WKLV GRFXPHQWKDQJYXZLWHFRXWRQRWLFH DSDUW IURP V
VLJQHGH -LDQJVVXOLHVLZLFRKPKH DJUHHPHQW

3URGXFWV DQG LQIRUPDWLRQ SURYLGHG LQHWKWRG RSDXPH
-LDQJVVX -LH-LH DVVXIPHLOQR\URVSDQVLQIULQJHPPHQW RI RW
ZKLFK PD\ UHVXOW IURP WKH XVH RI VFKLW SURFXPHQW DQGS HL
DQG UHSODFHV DOO LQIRUPDWLRQ SUHYLRXVO\ VXSSOLHG

 LV D UHJLVWHUHGDQJJDGHLHDUN RUF-URHOWHFWURQLFV & R
&RS\ULJKW -LDQJVVX -LH-LH FLV & RHOWHFGVSPDQGLJKWV UHVH