



DESCRIPTION:



MAIN FEATURES

Truth Table

ABSOLUTE MAXIMUM RATINGS

Parameter	Symbol	Value	Unit

NOTE1: 100 s pulse, 100Hz frequency

NOTE2: AC for 1minute, R.H.=40~60%

ELECTRICAL CHARACTERISTICS

Parameter	Symbol	Condition	Min.	Typ.	Max.	Unit

JOCDC0CB

Recommended Operating Conditions

Characteristics	Symbol	Min.	Typ.	Max.	Unit

Note1: The recommended operating conditions are given as a design guide necessary to obtain the intended performance of the device. Each parameter is an independent value. When creating a system design using this device, the electrical characteristics specified in this datasheet should also be considered.

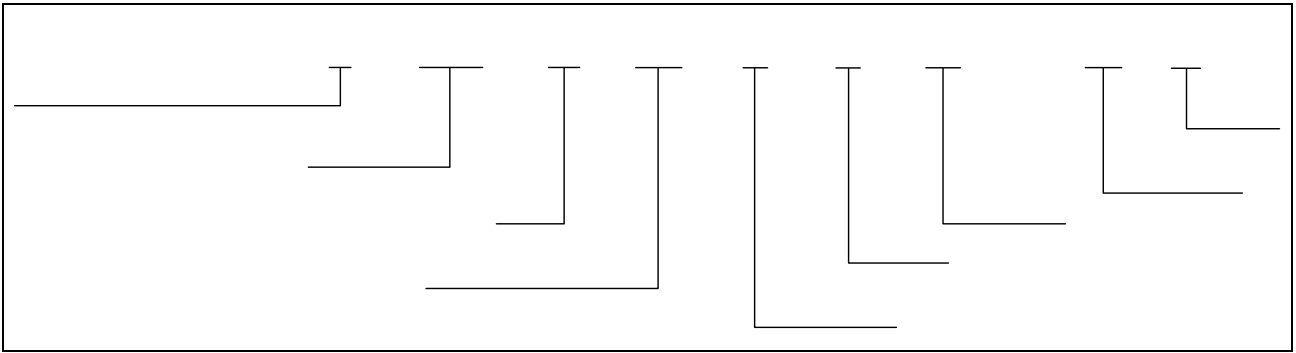
Note2 A ceramic capacitor(0.1μF) should be connected between pin 6 (V_{CC}) and pin 4 (GND) to stabilize the operation of a high gain linear amplifier. Otherwise, this photocoupler may not switch properly. The bypass capacitor should be placed within 1 cm of each pin.

Note3 The rise and fall times of the input on current should be less than 0.5 μs.

Note4: If the rising slope of the supply voltage (V_{CC}) for the detector is steep, stable operation of the internal circuits cannot be guaranteed. Be sure to set 3V/μs or less for a rising slope of the V_{CC}.

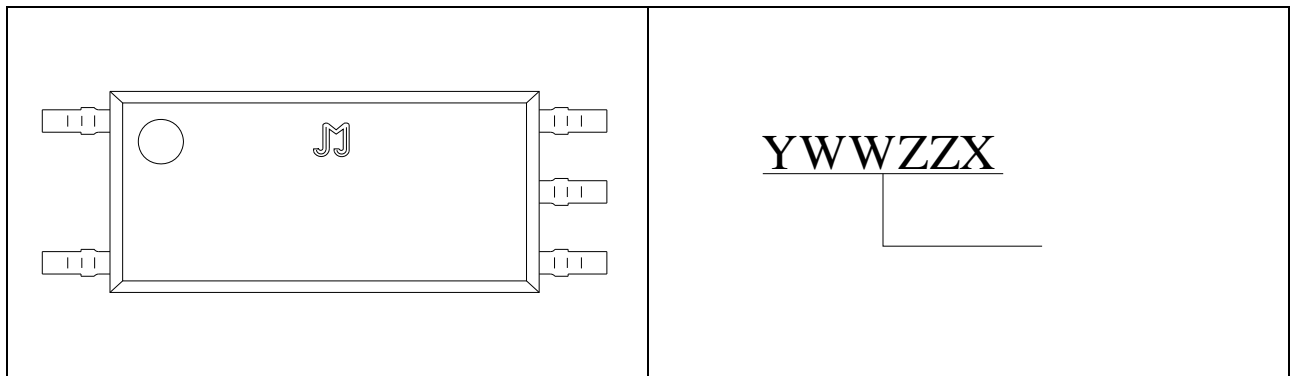
Note5: Denotes the operating range, not the recommended operating condition.

ORDERING INFORMATION



Packing Quantity	
Option	Quantity
None/R	3000 Units/Reel

MARKING



Characteristics Curves

FIG.1:

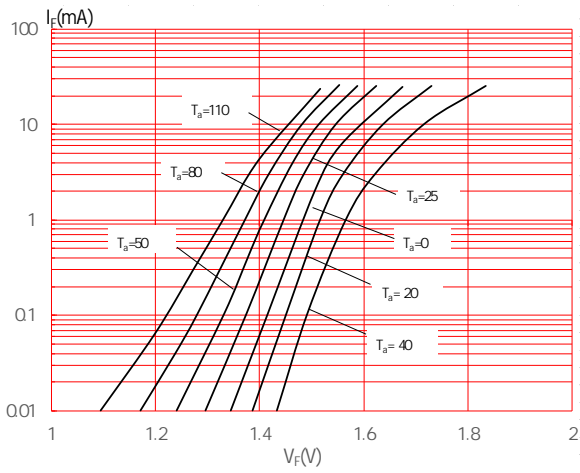


FIG.2:

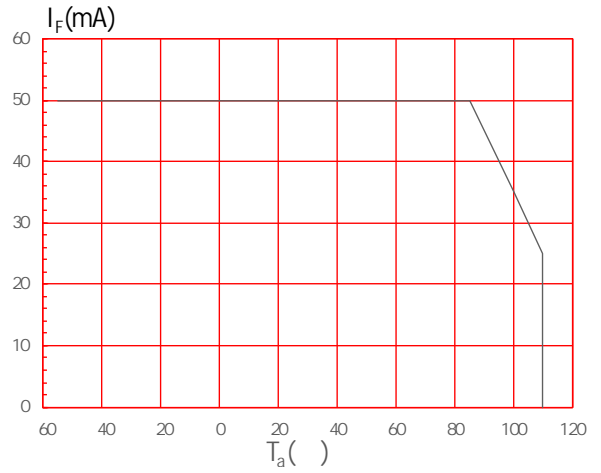


FIG.3:

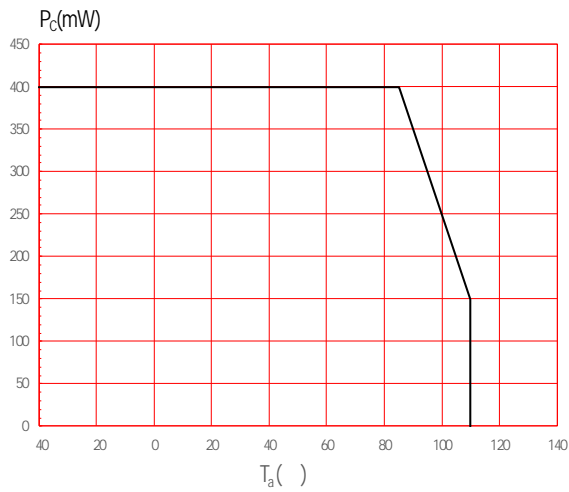


FIG.4:

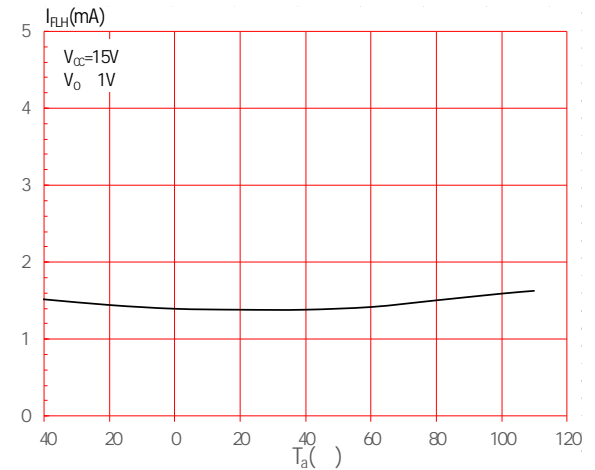


FIG.5:

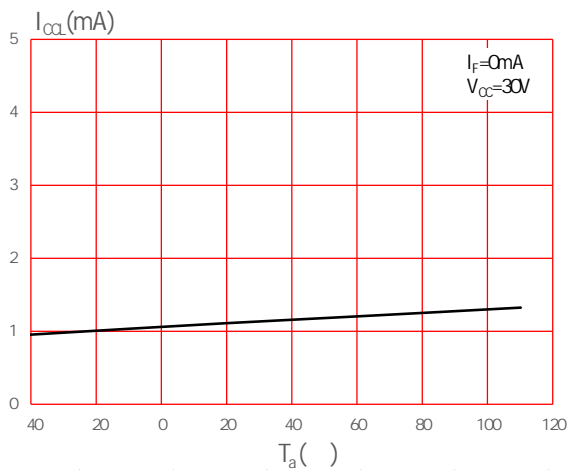


FIG.6:

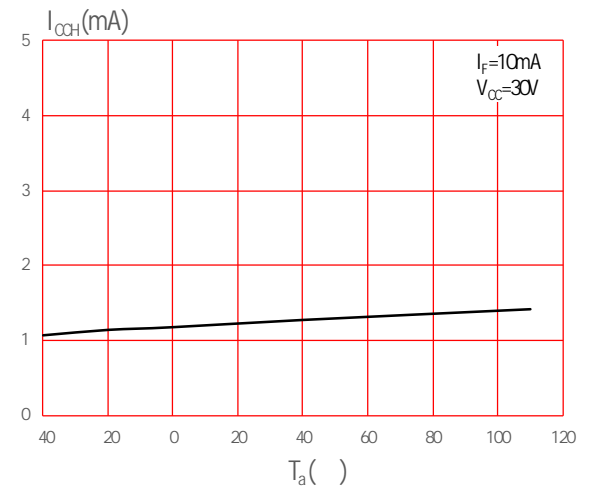


FIG.7:

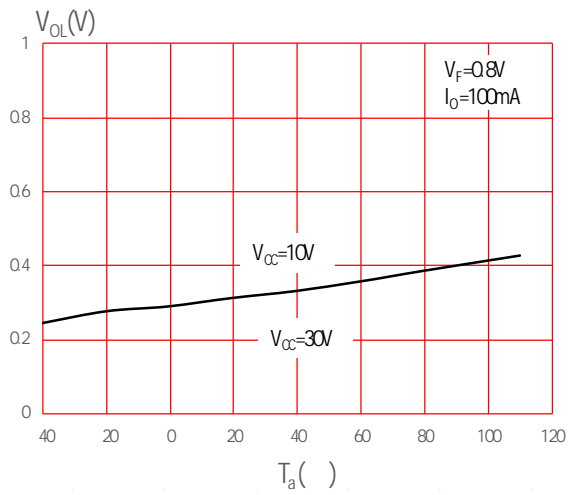


FIG.8:

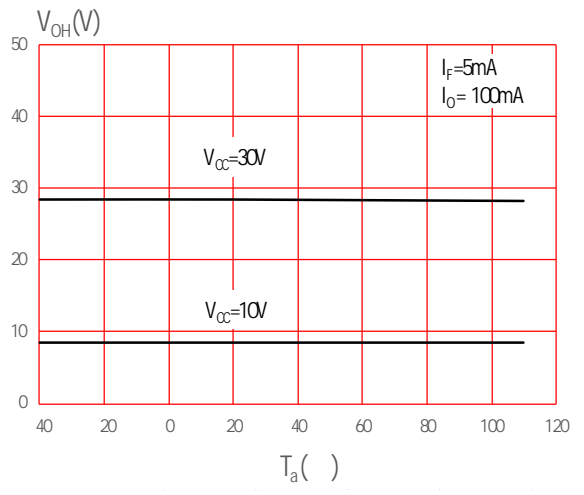


FIG.9:

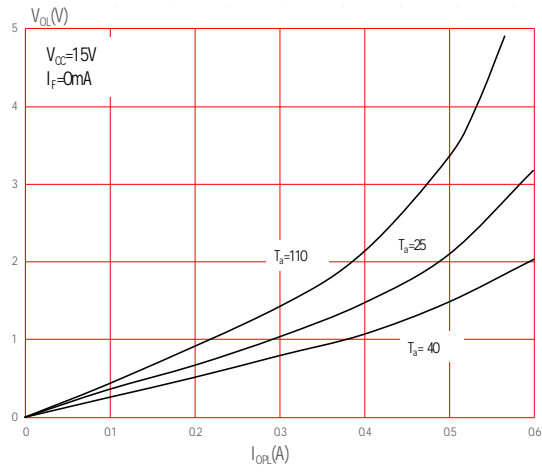


FIG.10:

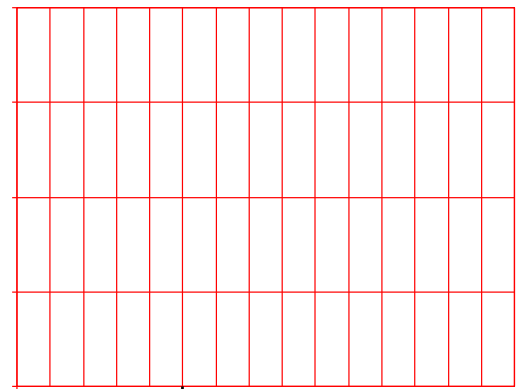
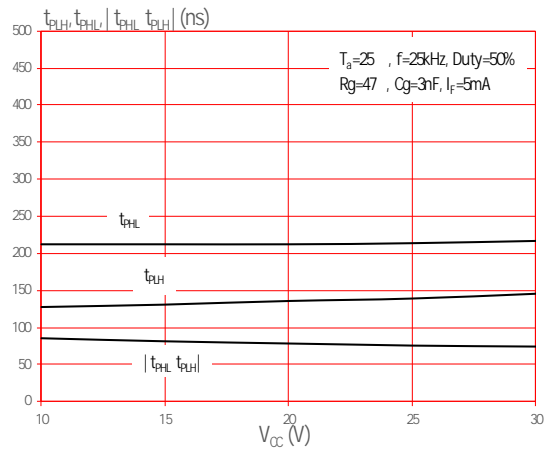


FIG.13:



Test Circuits

FIG.14:

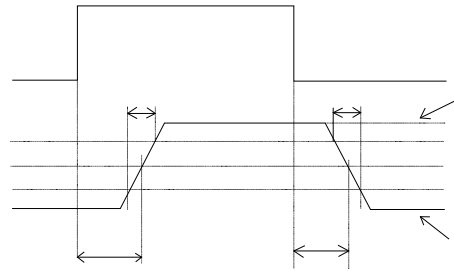
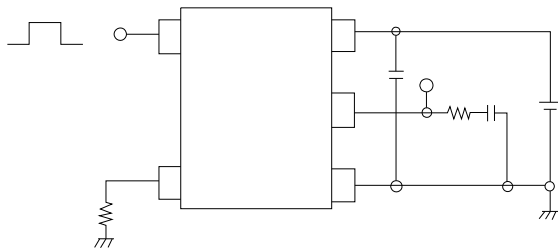
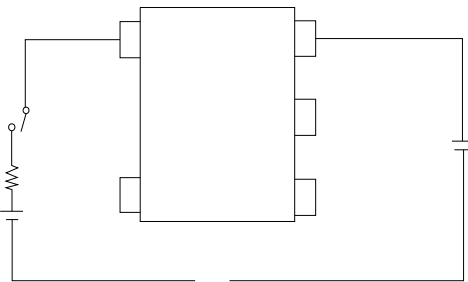


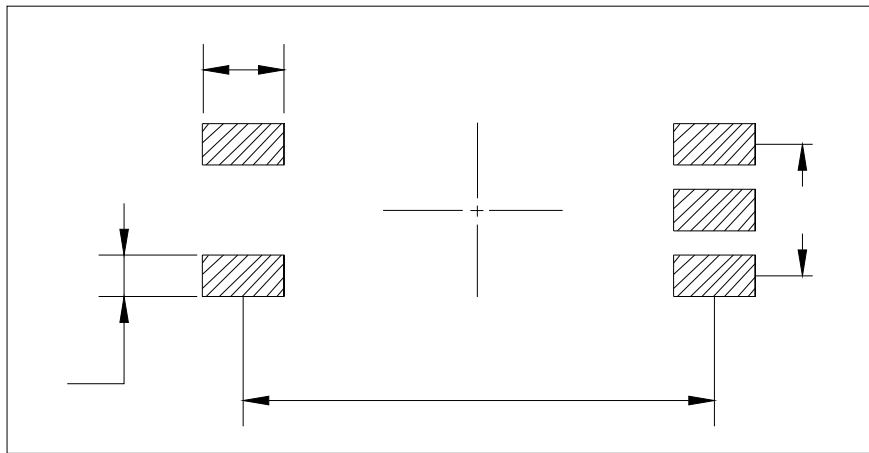
FIG.15:



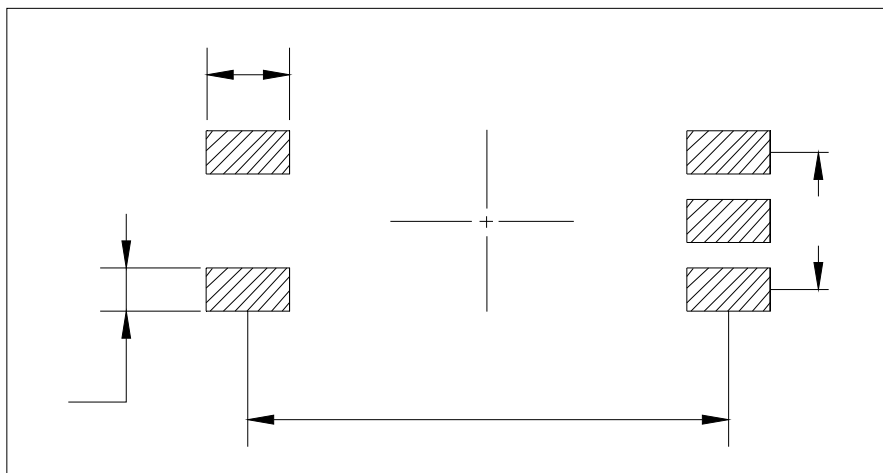
JOCDC0CB

RECOMMENDED SOLDER MASK (Dimensions in mm unless otherwise stated)

LSOP5



LSOP5W



CARRIER TAPE SPECIFICATIONS (Dimensions in mm unless otherwise stated)

Option None/R

