



^ Z/Wd/KEW

7KH SURGXFWV DUH JDWH GULYHU RS  
 ',3 SDFNDJH ZLWK GRUPLUQWVSOHLRQV  
 FRQVLVWV RI DQ LQFIDOOHGRXSBSW W  
 KLJK JDLQ KLJK VSWHRC \$&FWRS H,WH S  
 JXDUDQWHHG SHUIRULPDDQVLRDQ QD WSWR  
 WR ,W LV SK\VLFDQO\ VPDOOHU DQO  
 VDIHW\ VWDQGDUGHGVLIRUXOEWLROF, W  
 VPDOOHU IRRWSULQW VROXWLRQ IRU  
 VWDQGDUG FHUWLILFDWLRQ \$Q LQWH  
 JXDUDQWHHG FRPPRQ PPRXGLWUHQV L  
 LV LGHDO IRU VPDQG SODMV 0\*267(7 JD  
 7KH SURGXFWV DUHQZLGHVWU LQVCH GQLYHU  
 JDWH GULYHUV 028)H0WDMQHG&EJWLRQ  
 KRPH DSSOLDQFHV



:K í r ô W

:K í r ô ^



L Q D S  
 V H G  
 S  
 L W K L  
 V D  
 / W K D V  
 K L H O G

D /E & dhZ ^

+LJK LVRODWLRQ 9506  
 %XIIHU ORJLF W\SH  
 2SHUDWLQJ WHUPSOHQJHDWXJL WR f &  
 5(\$+ 5R+6 FRPSOLDQFH  
 +%0 + \$ 00 0 &'0 &  
 &4& DSSURYHG  
 9'( DSSURYHG  
 8/ DSSURYHG

dOE μšZ d o

/( ')	9& 9( 3RVLWLYH *	9& 9( RLQHJDWLYH *	2XWSXW
2))	9	9	/RZ
21	9	9	/RZ
21	9 9	9 9	75\$16,7,21
21	9 9	9 9	+, * +

^K>hd D y/DhD Z 7HPSHUDWXUH f &

Parameter		Symbol	Value	Unit
/('	)RUZDUG &XUUHQW	)		
	3HDN )RUZDUG &XUUHQW <sub>3</sub>	3	7	\$
	5HYHUVH 9ROWDJH	9 <sub>5</sub>		
	3RZHU 'LVVLSDWLRQ	3		P:
'HWHFWRU	2XWSXW 9ROWDJH	2	9	
	6XSSO\ 9ROWDJH	9&&		
	3RZHU 'LVVLSDWLRQ	3&		P:
,VRODWLRQ 9ROWDJH		9LVR	8	9UPV
2SHUDWLQJ 7HPSHUDWXUH		7RSU	a	
-XQFWLRQ 7HPSHUDWXUH		7M		
6WRUDJH 7HPSHUDWXUH		7VWJ	a	
7RWDO 3RZHU 'LVVLSDWLRQ		3WRW		P:
6ROGHULQJ 7HPSHUDWXUH		7VRO		

EKd iïi • %µµ• U iïi, Ì (œ µ v Ç  
EKd î ( )œ iu]vµš U ZX,XAđi• òi9

> dZ/ > , Z d Z 7HPSHUDWXUH f &

Parameter		Symbol	Condition	Min.	Typ.	Max.	Unit
,QSXW	)RUZDUG 9ROWDJH )	)	9\$	,			9
	5HYHUVH &XUUHQW <sub>5</sub>	5	9	9			\$
	7HUPLQDO &DSDFLWDQFH	7	10+				S)
2XWSXW	3HDN +LJK OHYHO 2XWSXW <sub>23+</sub>	9&&	9				\$
	&XUUHQW	9 <sub>2</sub>	9&& 9				\$
	3HDN /RZ OHYHO 2XWSXW <sub>23/</sub>	9((	9				\$
	&XUUHQW	9 <sub>2</sub>	9(( 9				\$
	+LJK /HYHO 6XSSO\ &XUUHQW <sub>9&amp;&amp;</sub>	9 <sub>2</sub>	2SHQ				P\$
	/RZ /HYHO 6XSSO\ &XUUHQW <sub>9&amp;&amp;</sub>	9 <sub>2</sub>	2SHQ				P\$
+LJK /HYHO 2XWSXW <sub>2+9ROWDJH</sub>	9&&	9	9			9	
		2	P\$				

	/RZ /HYHO 2XWSXW 9ROWD&H 9	9) 9				9
	7KUHVKROG ,QSXW )&XUHHQW 9	9&& 9				P\$
	7KUHVKROG ,QSXW 9ROWD&H 9	9&& 9	9			9
	6XSSO\ 9ROWD&H 9&&					9
	89/2 7KUHVKROG	989/2	92 Ú 9			9
		989/2	92 Ø 9			9

^t/d ,/E' ^W /&/ d/KE

Parameter	Symbol	Condition	Min.	Typ.	Max.	Unit
3URSDJDWLRQ 'HOD\ 7LPH WR +LJK 2XWSXW /HYHO	$V_{W+}$	5J &J Q) ) : P\$ 9&& 9				QV
3URSDJDWLRQ 'HOD\ 7LPH WR /RZ 2XWSXW /HYHO	$V_{W/}$	5J &J Q) ) : P\$ 9&& 9				
3URSDJDWLRQ 'HOD\ 'LIIHUHQFH %HWZHHQ \$Q\ 7ZR 3DUWV	$V_{W/} / V_{W+}$	5J &J Q) ) 8: P\$ 9&& 9				
2XWSXW 5LVH 7LPH	$W_{WR}$	5J &J Q) ) : P\$ 9&& 9				
2XWSXW )DOO 7LPH	$W_{R}$	5J &J Q) ) : P\$ 9&& 9				
&RPPRQ 0RGH 7UDQVLHQW ,PPXQLW\ DW +LJK /HYHO 2XWSXW	$V_{D}$	) P\$ 9&& 9 7D 92 PLQ 9&0 9SS	"	"		N9 V

&RPPRQ 0RGH 7UDQVLHQW ,PPXQLW\ DW /RZ /HYHO 2XWSXW	) P\$ 9& 9 7D 92 PD[ 9 9&0 9SS	“ “	“ “	N9 V
---	--	-----	-----	------

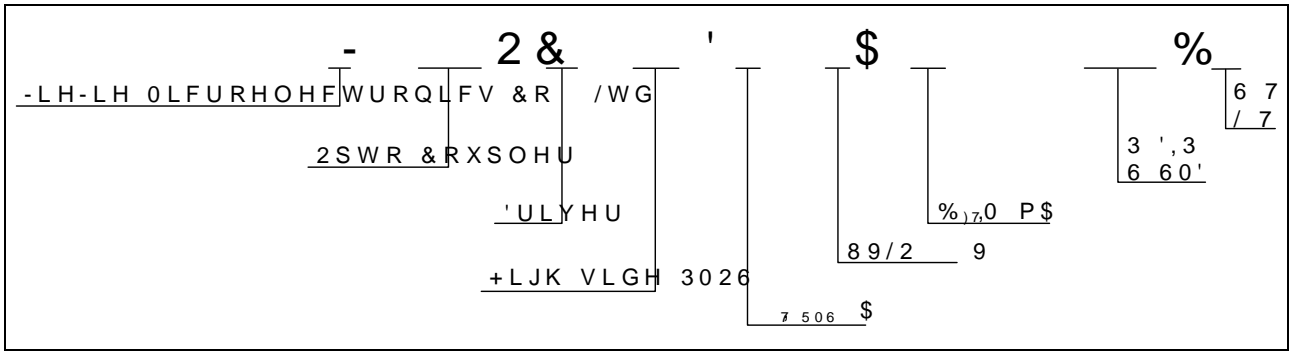
o o dÇ%] o Àîõµ • š d  
 E}š W /v%µš •]Pv o ~(Aîñl, ÌU µšÇAñ]i•9 b š•CEšZš (vA ñv •%o} CE ÁoZ }•Z X]v  
 %oCE} v •šCE Ç Á]CE]vP %o ]š v X  
 E}š W ,D]• šZ u Æ]uµu CE š }( ( oo } ( šZ }uu}v uµ}•š Àyoš Á]š Z  
 šZ }µš%µš À}oš P ]v šZ Úáßß]XZ]PZ •š š ~sK  
 E}š W D> ]• šZ u Æ]uµu CE š }( CE]• }( ššZ v }uµµvšu]v Ä]š  
 šZ }µš%µš À}oš P ]v šZ ØóšPX] o}Á •š š ~sK

Z }uu v K%o CE š]vP<sup>78</sup> }v ]š]v•

Characteristics	Symbol	Min.	Typ.	Max.	Unit
,QSXW 2Q VWDWH,)&XUUHQW					P\$
,QSXW 2II VWDWH,9R,OWDJH			9		
6XSSO\ 9ROWDJH 9&&					9
2SHUDWLQJ )UHTXHQFV					N+]

E}š W dZ CE }uu v }%o CE š]vP }v ]š]v} CE P]•À CE Ç •š} } š]Pw  
 ]vš v %o CE (}CE u v }( šZ À] X Zv %ov šE Àu ošµ CE ]Z w ]CE %o  
 •Ç•š u •]Pv µ•]vP ššZ]•o À]CE]U o Z•CE š]CE]š]šZ]š •Z}µo o•  
 }v•] CE X  
 E}š W CE u] %o ]š}CE ~iXí... &• •Z}µo s }vvv š%o]v šóÁ ~VE %o]š  
 •š ]o]í šZ }%o CE B]v b]v ZCEP Zur%o o] (] CE X KšZ CE Á]• U šZ]• %o Z  
 %oCE}%o CE oÇX dZ Ç]µo•• %mo ]š}CE]šZ]Z í%o ]v X(  
 E}š W dZ CE]• v ( oo š]u • } ( šZ ]v%µšZ}vriX CE CE •vš •Z}µo  
 E}š W /( šZ CE]•]vP •o}%o } ( šZ ( }CE%oZ oÇ Á}oš}CE ]•s•š %oU •š o  
 ]vš CE v o ]CE µ]š• všv}š PµCE š} •š i sl...• }CE o•• X}CE CE]•  
 E}š W v}š • šZ }%o CE }š]šZ CE v P}uu v }%o ]CE]š]X P }

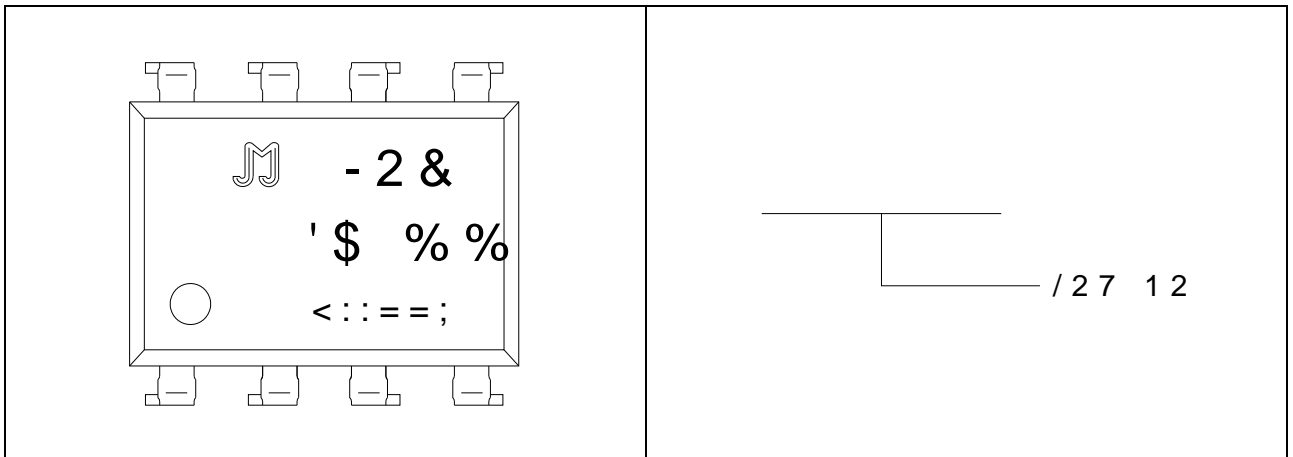
KZ Z/E' /E&KZD d/KE



%

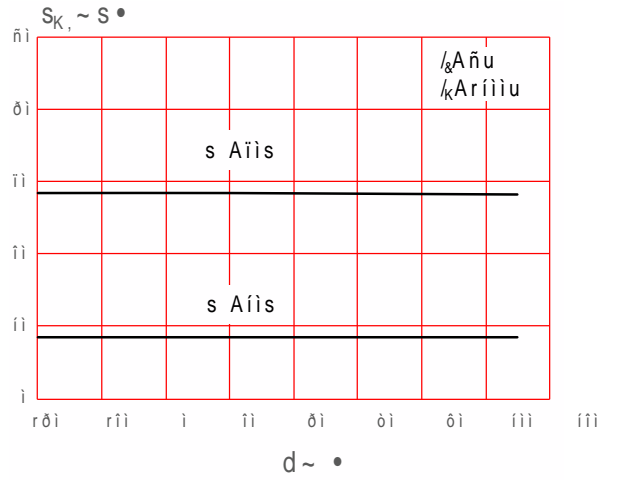
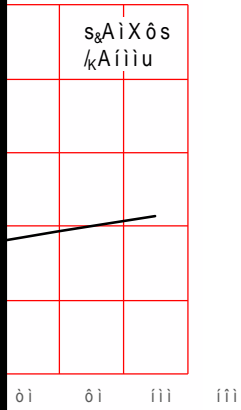
W I]vP Yμ vš]šÇ	
K% š]}v	Yμ vš]šÇ
/W	50 hv]š•ldμ
^D	íîì hv]š•lZ o

D Z</E'





W S X W V 9 R S P E L H Q W G.8: + L J K O H Y H O R 2 X W D S J X I W Y 9 \$ P E L  
7 H P S H U D W X U H



W S X W V 9 R 3 H D N / R G.10: + L J K O H Y H O 2 X W S X W 9 R O W D  
& X U U H Q W 3 H D N + L J K O H Y H O 2 X W S X W & X U U H

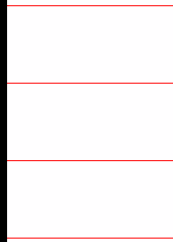
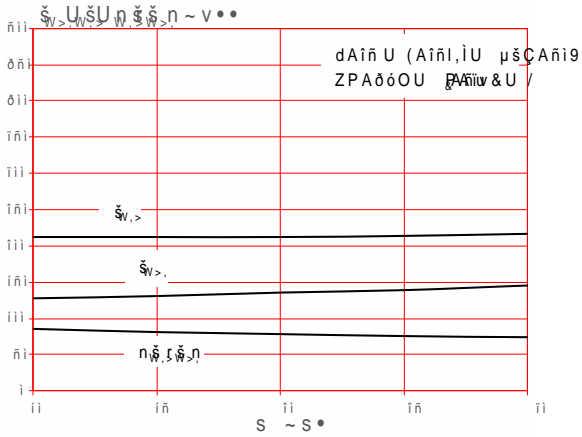


FIG.13: 3URSDJDWLRQ 'HOD\ 7LPH 3XOVH :LGWK  
'LVWRUWLRQ YV 6XSSO\ 9ROWDJH



d • š ]OE μ]š•

FIG.14: 6ZLWFKLQJ 7LRPH XHWHV DQG :DYHIRUP

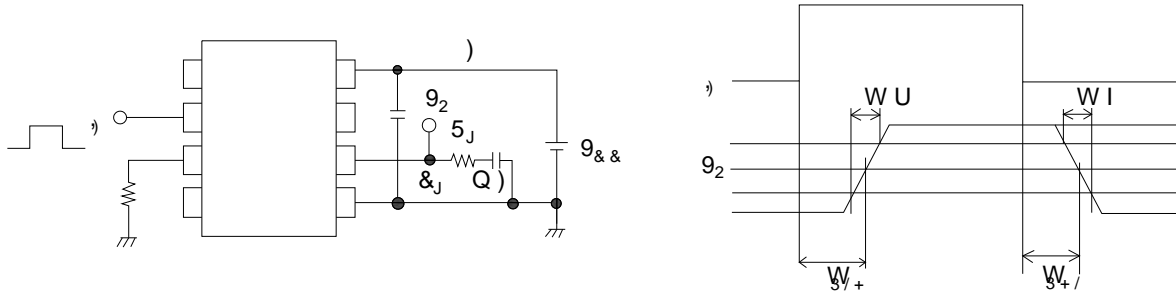
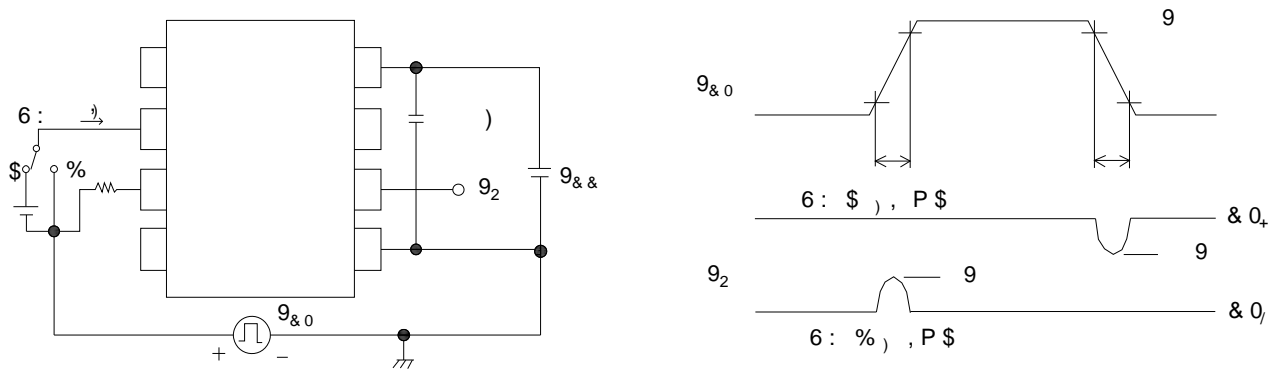
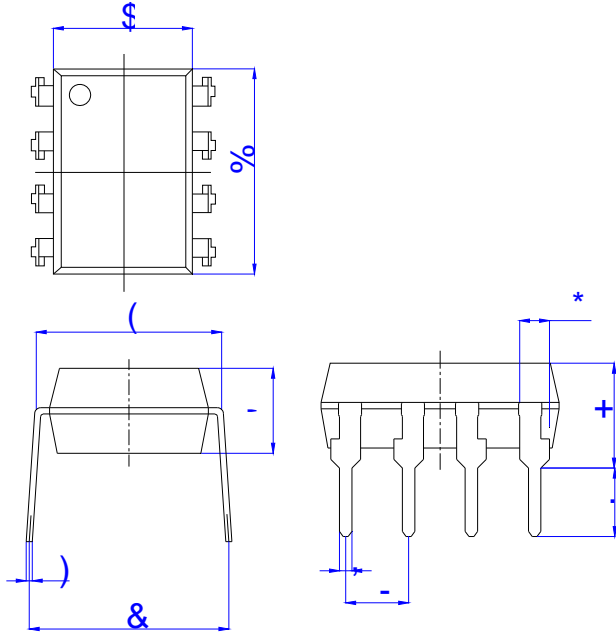


FIG.15: &RPPRQ 0RGH 7UDQVL7HQW , &PUXQLW DQG :DYHIRUP



W I P ] u v • ] } v ~ h v ] š W u u •

Standard DIP Type:

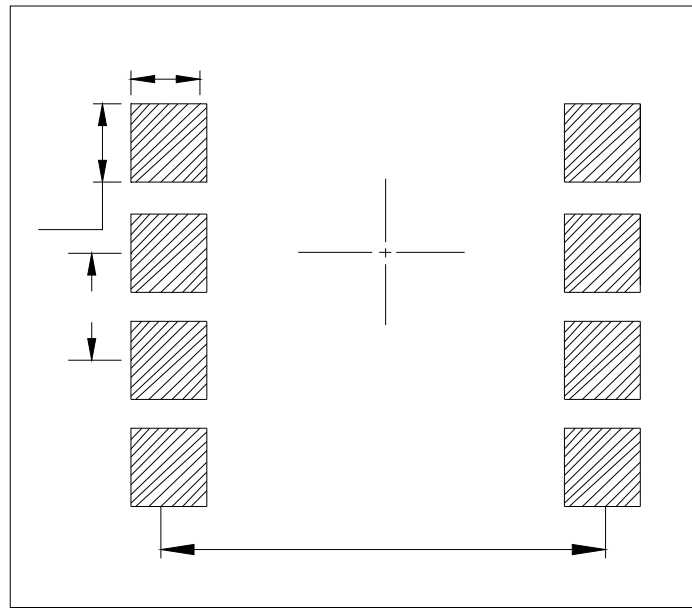


5 HI	'LPHQVLRQV					
	0LOOLPHWHUV			,QFKHV		
	0LQ	7\S	0D[	0LQ	7\S	0D[
\$						
%						
&						
(						
)						
*						
+						
,						
-						
.						

Option SMD Type:

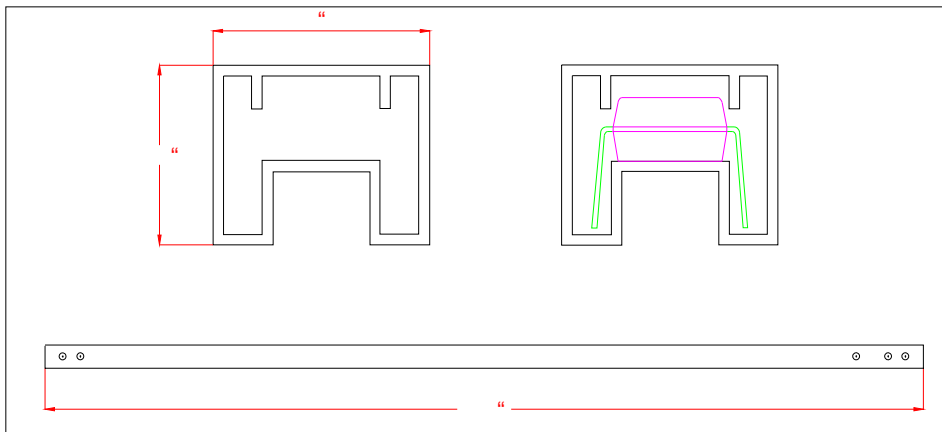


Z K D D E    ^K> Z D ^< ~ ]u v•]}v• ]v uu μvø •• }šZ Œ



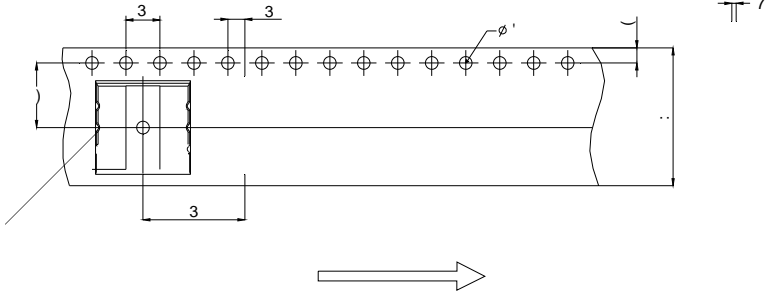
dh ^W /&/ d/KE^ ~ ]u v•]}v• ]v uu μvo •• }šZ ŒÁ]•

**Standard DIP**



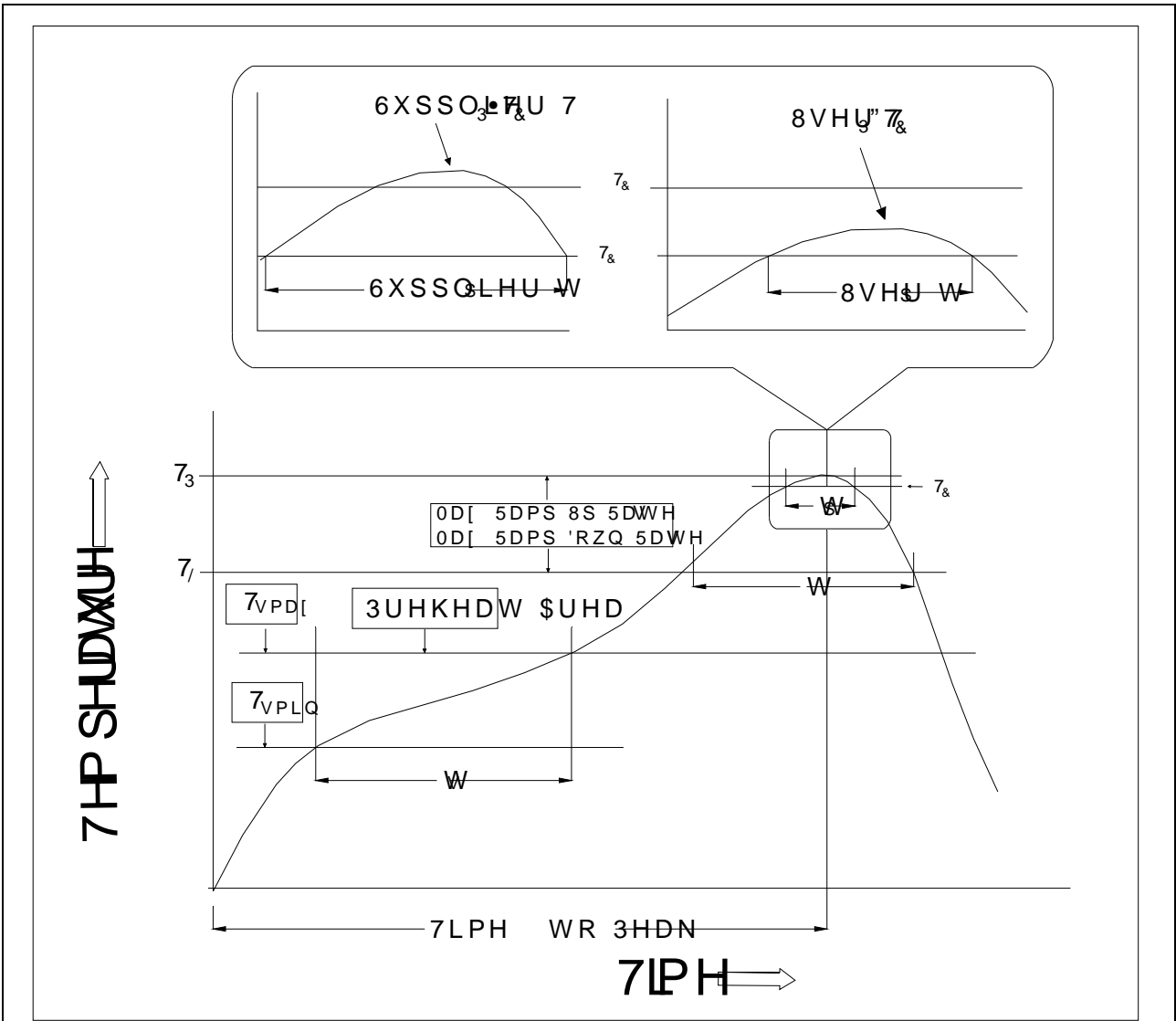
ZZ/ Z d W ^W /&/ d/κ]E^ }v]uu μνo •••ššž ĆÁ]•

Option S/L



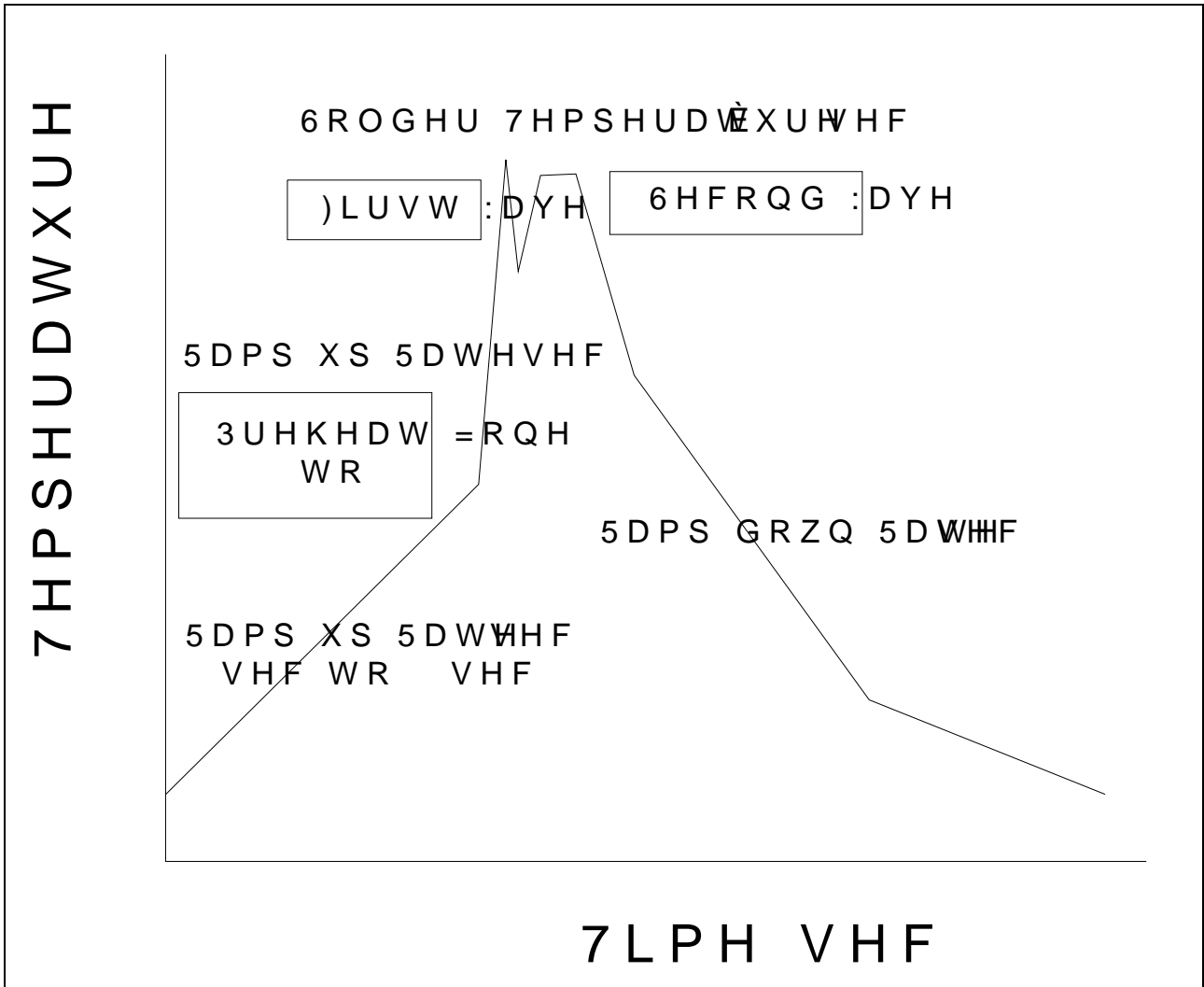
	'LPHQVLRQV					
5 HI	0LOOLPHW			HUV ,QFKHV		
	0LQ	7\ S	0D[	0LQ	7\ S	0D[
'						
3						
3						
3						
(						
)						
7						
:						

Z > Kt / E & K Z D d / K E



Profile Feature	Sn-Pb Assembly Profile	Pb-Free Assembly Profile
7HP SHUDWXUH 0LQ	7VPLQ	
7HP SHUDWXUH 0D[	7VPD[	
7LPH WV IURP 7VPLQ WR 7VPD[		VHFRQGV
5DPS XS 5DWH W/ WR W	VHFRQG PD[	VHFRQG PD[
/LTXLGXV 7HP SHUDWXUH 7/		
7LPH W/ 0DLQWDLQH \$ERYH 7/		VHFRQGV
3HDN %RG\ 3DFNDJH	7HP SHUDWXUH	
7LPH W3 ZLWKLQ		VHFRQGV
5DPS GRZQ 5DWH 73 WR	VHFRQG PD[	VHFRQG PD[
7LPH WR 3HDN 7HP SHUDWXUH		PLQXW R\ QXW HV PD[

t s ^K> Z/E'



, E ^K> Z/E' z ^K> Z/E' /ZKE	
6ROGHULQJ 7HP SHUDWXUH	f
6ROGHULQJ 7LPH	V PD[

1RWH

5HIORZ VROGHULQJ LV UHFRPPHQGHG/ DWRZKH QHPSHWDWWDQW DQW D  
\$YRLG GLUHFV FRQVHDVSRPHQZDQWXRUDFRU H[FHHGLQJ LWV PD  
VWRUDJH WHPSHUDWXUH

\$SSOLFDWLRQ RKHUSRYXENRQLVLSOHGDDWHG WHPSHUDWXUHV ,QV  
VFHQDULRV DQHPSVOLGRWRHFFHHG 1

(QVXUH WKH FRPSRQHQW KDV FRROHG SURPHQWQZLXPSWHDXHCL  
PDQXIDFWXULQJ VWHSV

7KH FRPSRQHQW KDM BQKHHDLOZKHQVWDQGHGKFBQGLWLRQV


5HFRPPHQG VWRUDJH 7HPS a f&

5HFRPPHQG VWRUDJH KXPLGLW\

06/ OHYHO 06/

,QIRUPDWLRQ IXUQXPHQW/ LQ WKOLHGRHG WR EH DFFXUDWH D  
-LDQJVVX -LH-LH 0LRRHOWHFDWRVQLFHVQLRVUHRUSRQHLERQVHT  
RI XVH ZLWKRXW FRQVLGHUDWLRQ IRG MWFKQIQURPDVWLRQ  
LQ WKLV GRFXPHQW LQJYXZLWHFRXWRQRWLFH DSDUW IURP V  
VLJQH G -LDQJVVXOLHVLZLFRKPKH DJUHHPHQW

3URGXFWV DQG LQIRUPDWLRQ SURYLGHG LQ HQWVHG RSDXPH  
-LDQJVVX -LH-LH DVVXPHLOQR\URVSRQVLQIULQJHPPHQW RI RW  
ZKLFK PD\ UHVXOW IURP WKH XVH RI VXLW SURFXPHQW DQGS HL  
DQG UHSODFHV DOO LQIRUPDWLRQ SUHYLRXVO\ VXSSOLHG

 LV D UHJLVWHUHGDQJJDGHLHDUNRUFURHOWHFWURQLFV & R  
&RS\ULJKW -LDQJVVX -LH-LH CLVRRHOWHFGVSRQHLGLJKWV UHVH